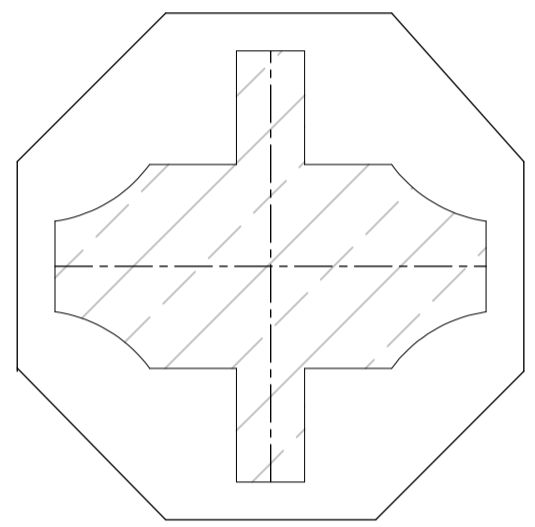
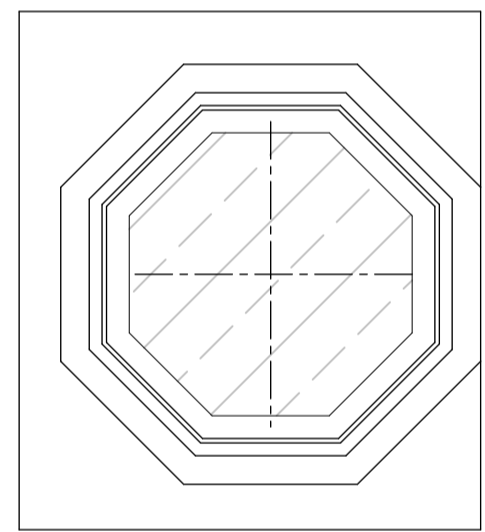


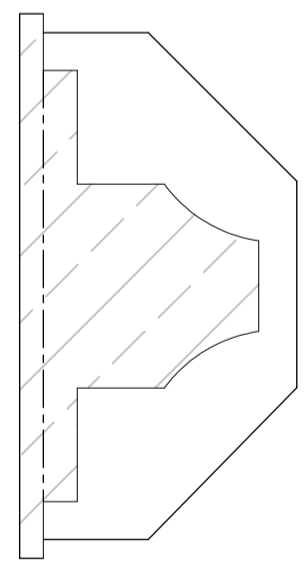
West Respond Pier Elevation & Sections 1:10  
(English Decorated)



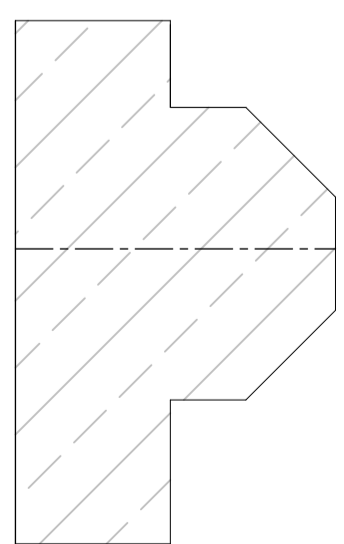
West Pier Capital & Arch Plan 1:10



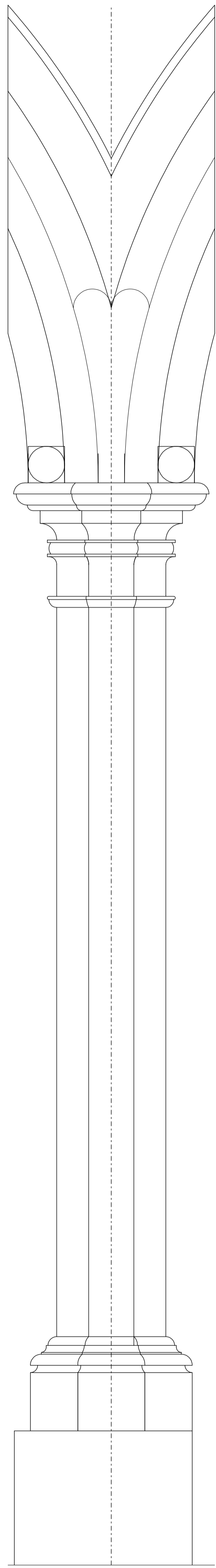
West Pier Column & Base Plan 1:10



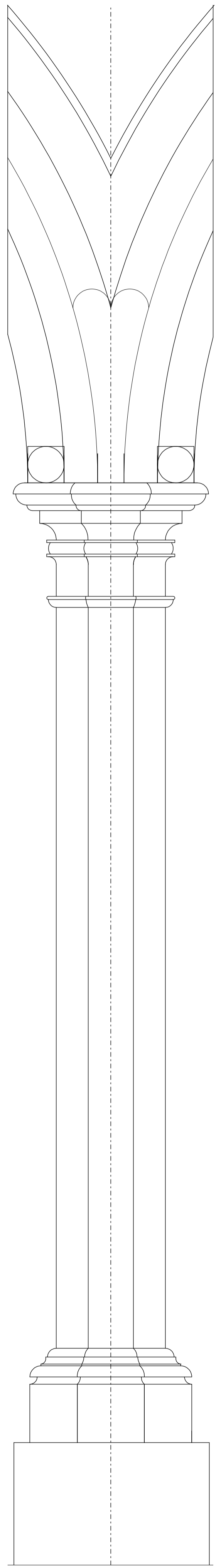
West Respond Capital & Arch Plan 1:10



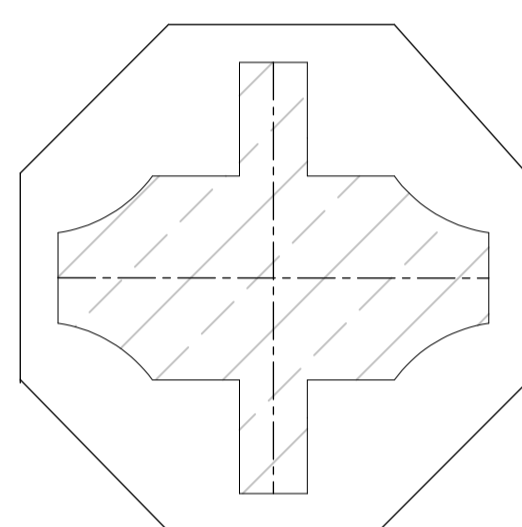
West Respond Column & Base Plan 1:10



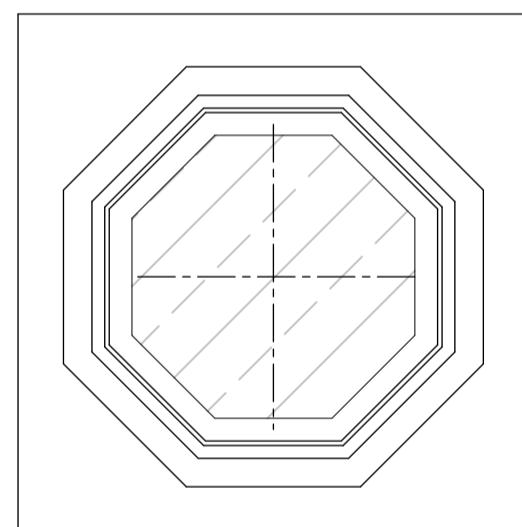
West Pier Internal Elevation 1:10  
(English Decorated)



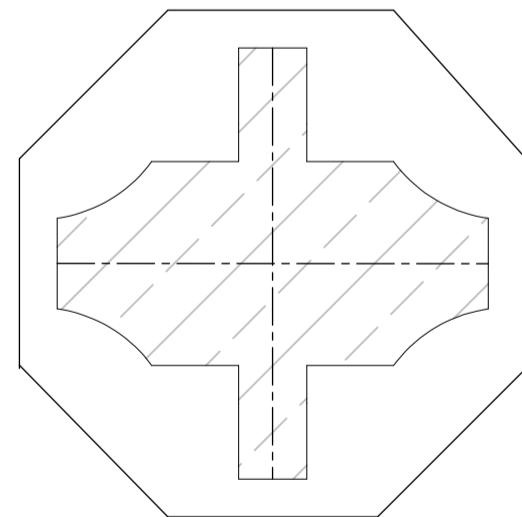
Middle Pier Internal Elevation 1:10  
(English Decorated)



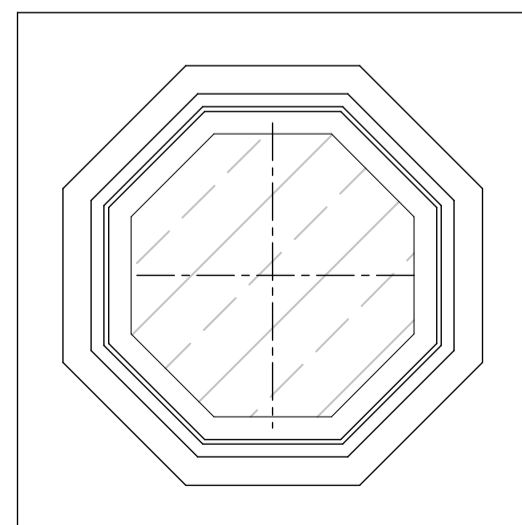
West Middle Pier Capital & Arch Plan 1:10



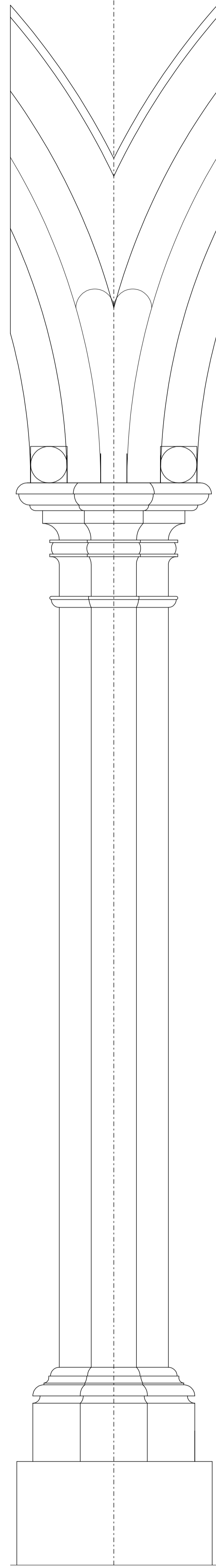
West Middle Pier Column & Base Plan 1:10



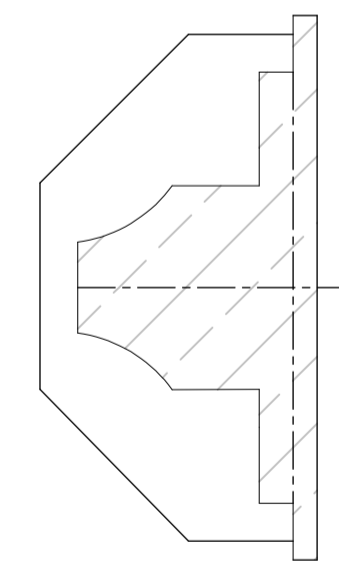
Middle Pier Capital & Arch Plan 1:10



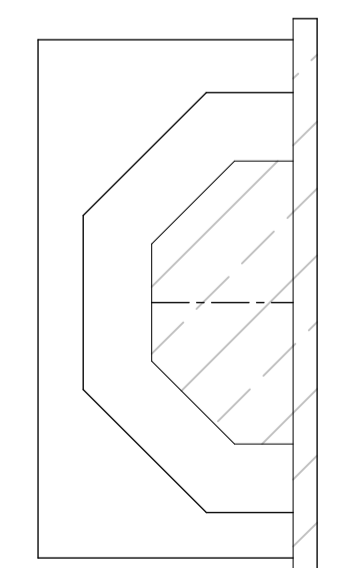
Middle Pier Column & Base Plan 1:10



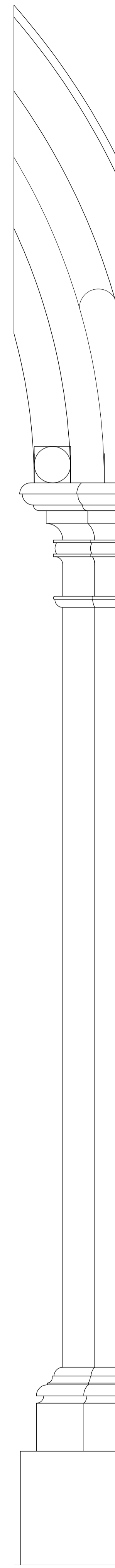
West Middle Pier Internal Elevation 1:10  
(English Decorated)



East Respond Pier Capital & Arch Plan 1:10



East Respond Pier Column & Base Plan 1:10



East Respond Pier Internal Elevation 1:10  
(English Decorated)

General Note.  
Historical records of relevant construction periods do not appear to exist. However the English Decorated style of the works carried out under the patronage of Thomas Beauchamp, 11th Earl of Warwick (1315-1369) include the North Aisle of which this Arcade is a part, the re-roofing of the Nave and installation of the clerestory in North & South Nave walls, and the installation of the large Chancel Arch. This work is in the English Decorated style which was fashionable at that time, and can be estimated to have been carried out between 1335 and 1360.

Please Note.  
This drawing is a record of the Church as it existed at the end of 2012. The drawing is concerned with the primary construction elements, and does not record internal fittings or external adornments such as monuments or plaques.

Development Note -  
Please note that this drawings shows the development of the drawn record at the date of the drawing. The drawing is still not complete, as certain information requires to be updated in terms of the on site measure at this time, and so this is a record of the work in progress, for assessment.

© McCombie Smith Architects



Greetham Church  
Details 5, North Arcade  
Draft Analysis

SCALE 1:10 on A1  
DATE Jan 2013  
DRAWN AS

628/12/S9