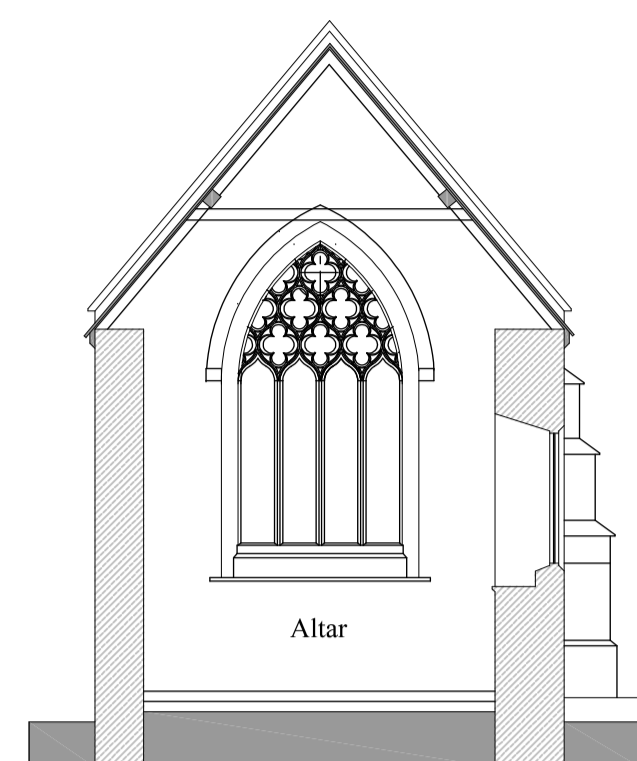
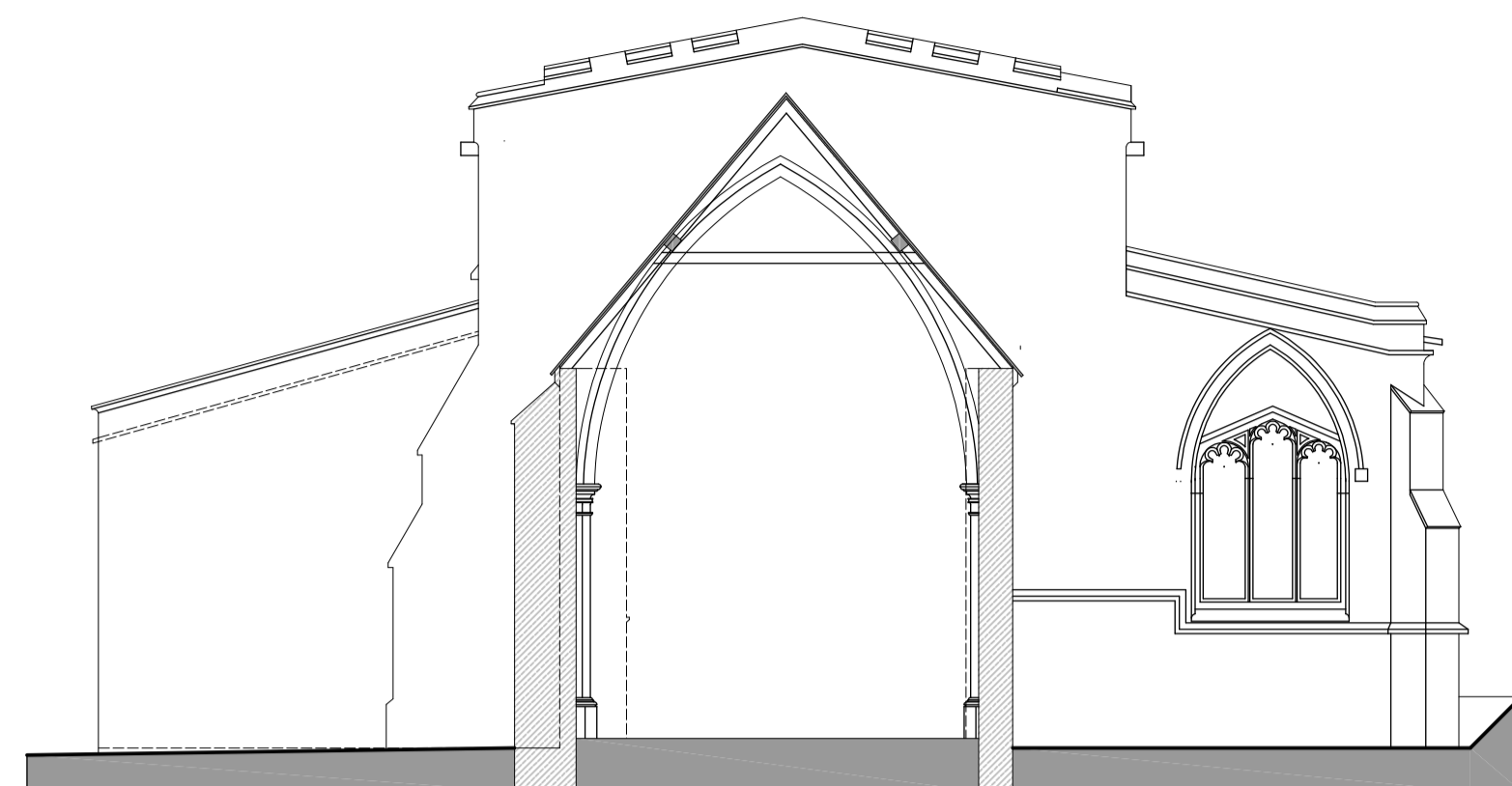


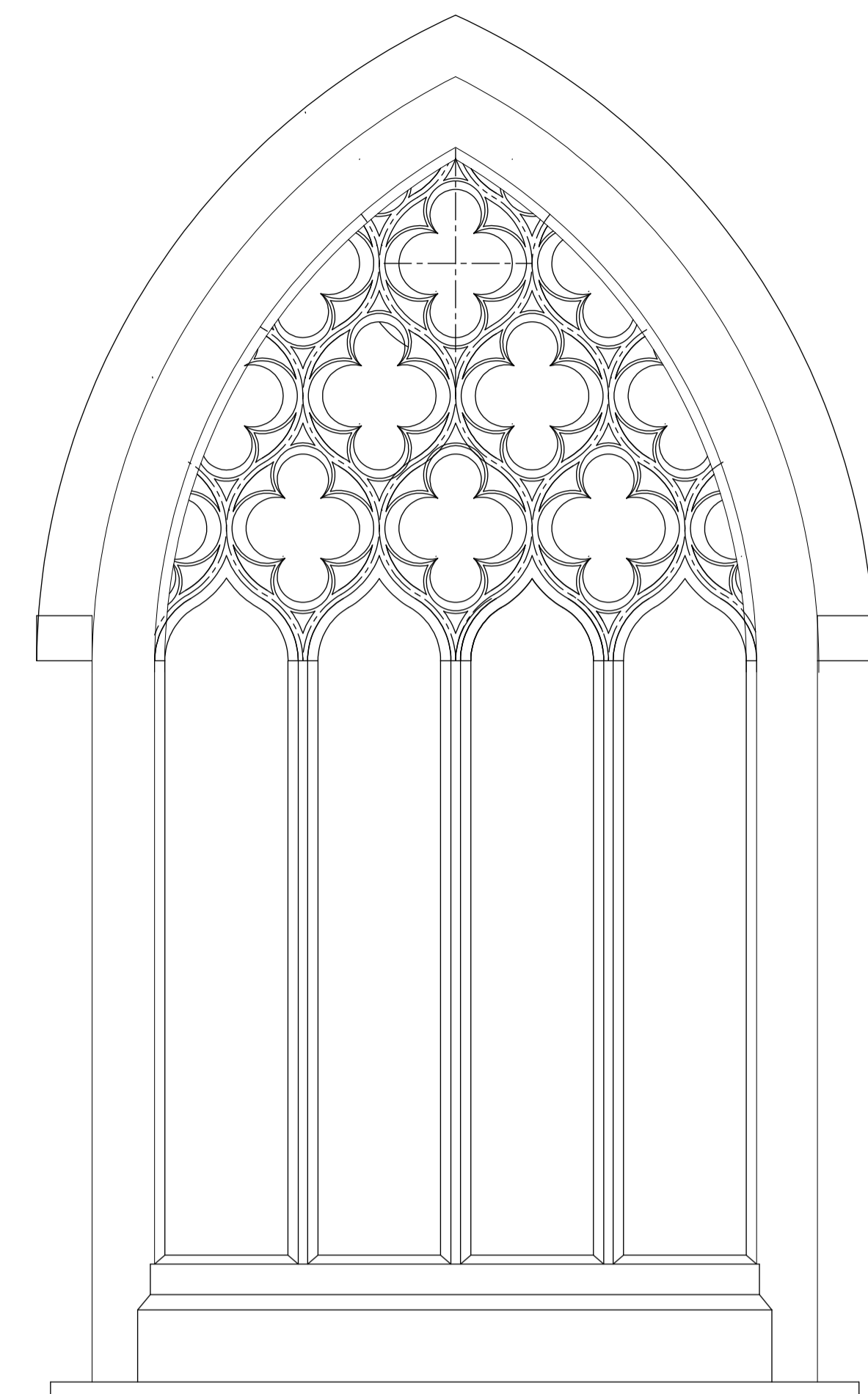
Extracted internal elevation of East window altered as part of mid-Victorian works



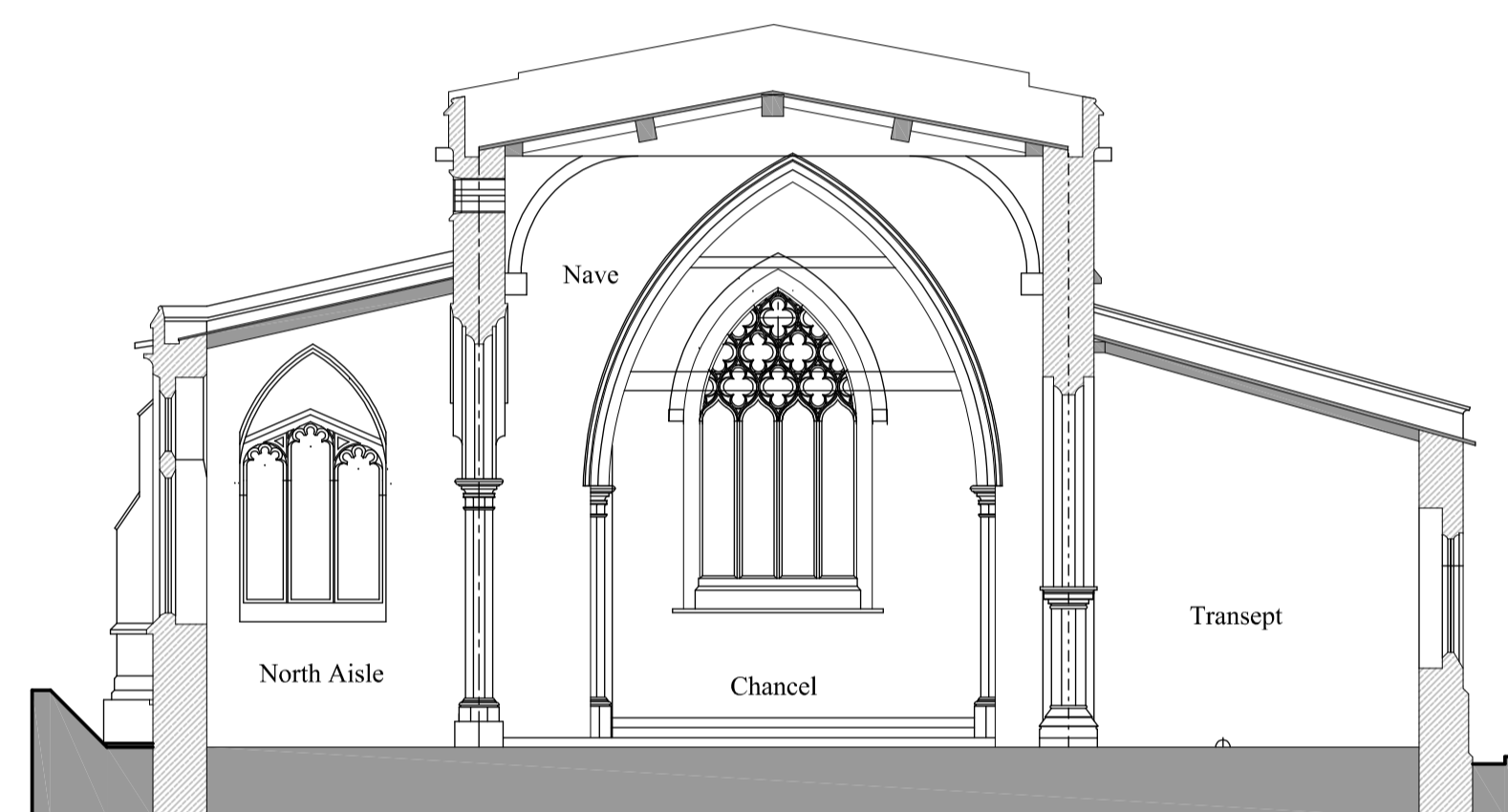
Section E - through Chancel looking East



Section F - through Chancel looking West with partial East Elevation



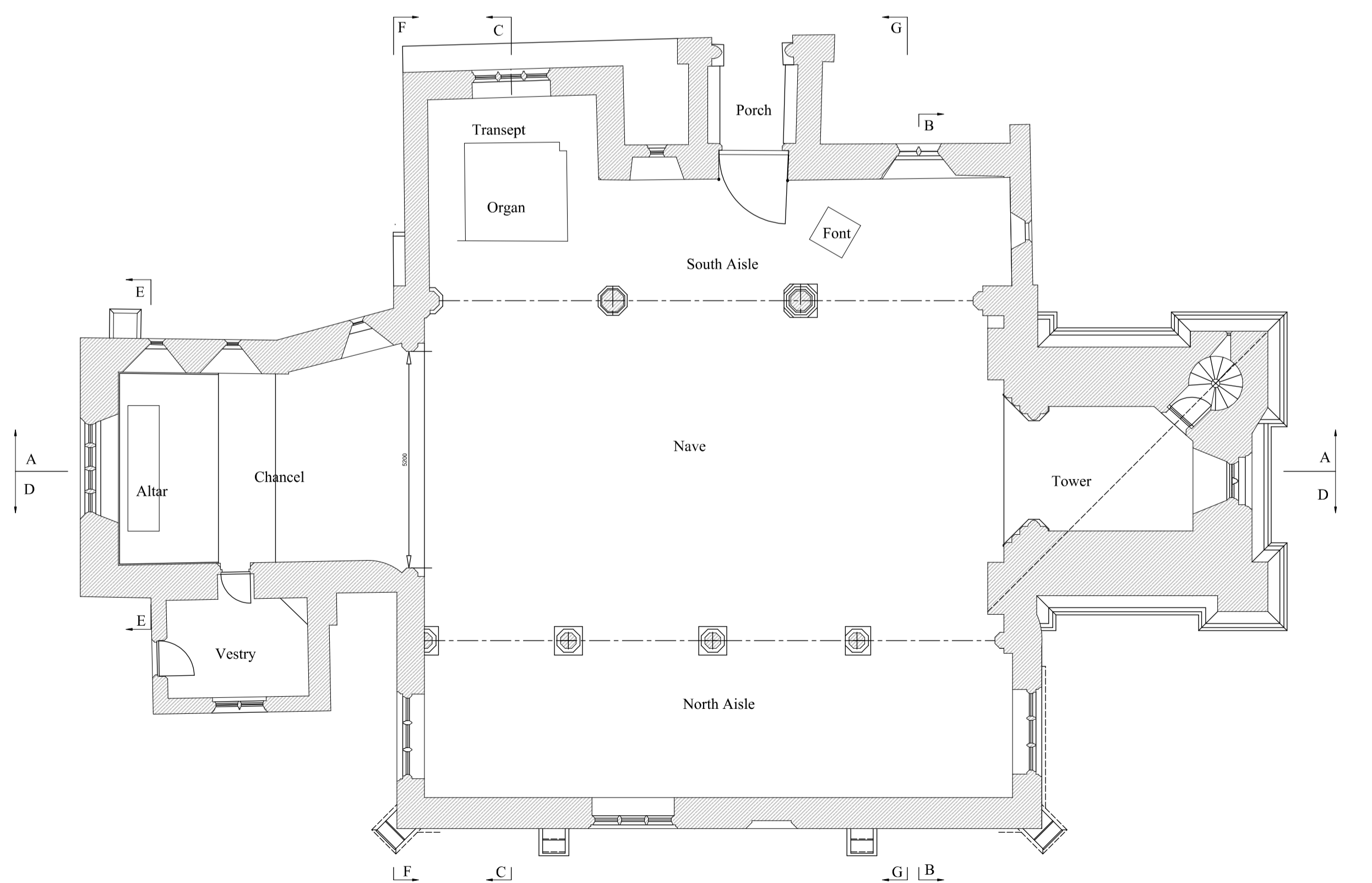
Internal Elevation of Chancel East Gable Window 1:20



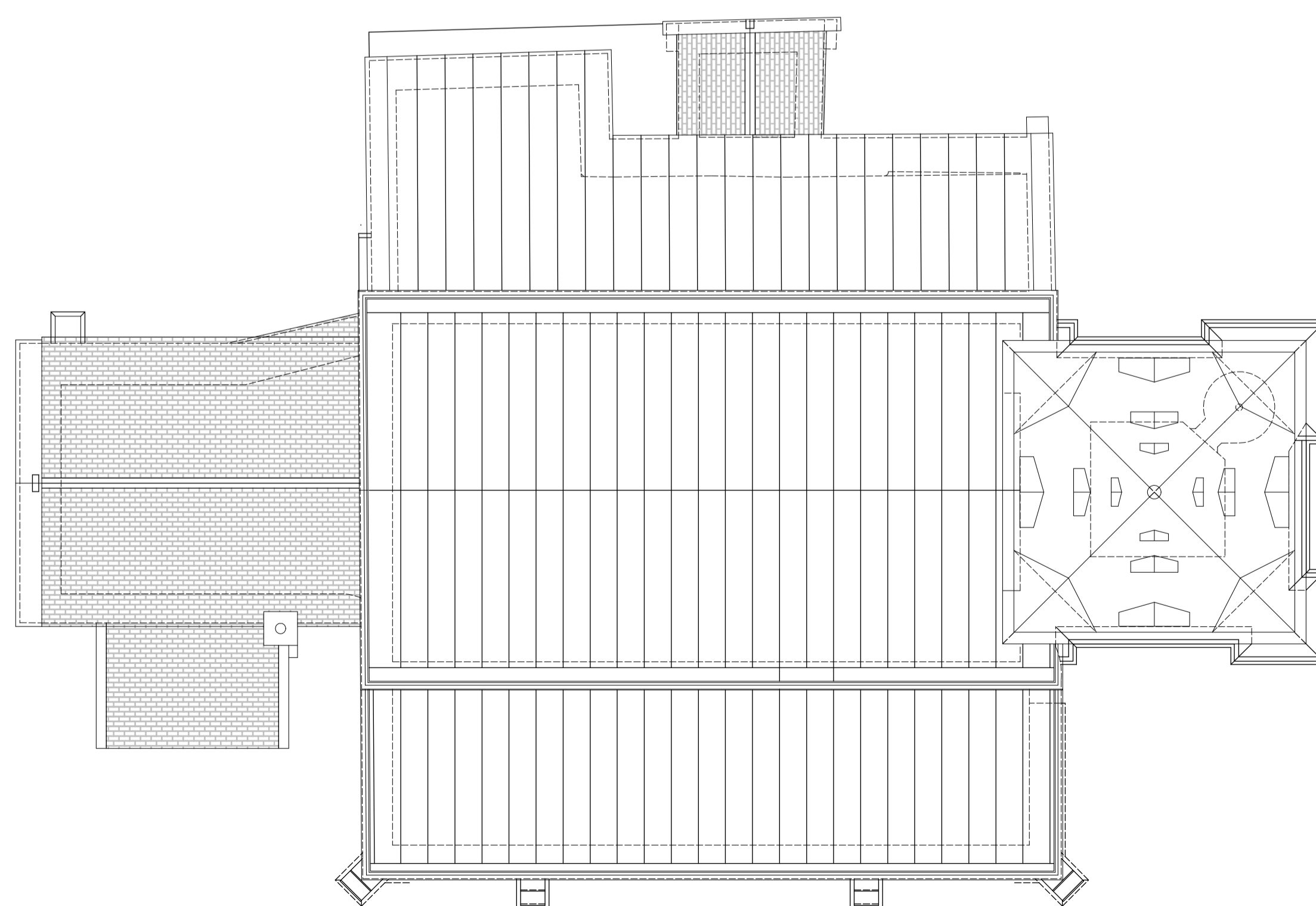
Section C - Through Nave, North & South Aisles looking East



East Elevation



Ground Floor Plan of Church



Roof Plan of Church

Please Note.  
This drawing is a record of the Church as it existed at the end of 2012. The drawing is concerned with the primary construction elements, and does not record internal fittings or external adornments such as monuments or plaques.  
This is due to the intention of establishing the extent of the built works at certain times, in order to establish the development of the building over the years. This is not to say that fittings and important artefacts in relation to the acts of service carried out within the church are not also important indicators of the age and functions of the church, such as the font, the altar, the pulpit, and the choir stalls and pews and the organ.  
The addition of the Kitchen, the toilet, the meter cupboard, the heating and the lighting all have bearing on the uses which the church is put to over the years. Another significant element is the bell frame and bells, which are a study in their own right, and the plaques and monuments which have been added over the years, and which all tell their story.

Development Note - dated 22nd December 2012  
Please note that this drawings shows the development of the drawn record at the date above. The drawing is still not complete, as certain information requires to be updated in terms of the on site measure at this time, and so this is a record of the work in progress, for assessment.

© McCombie Smith Architects



Greetham Church  
Ground Floor Plan & Roof Plan  
& Sections C, E, & F  
Analysis

SCALE 1:100 on A1  
DATE Nov 2012- Feb 2013  
DRAWN AS

628/12/S3